

Mechanical Pressure Controller (MPC-50)

TECHNICAL INFORMATION SHEET

ALUMINIUM

DESCRIPTION

Volfram Mechanical Pressure Controller Component, meticulously designed to meet the demands of modern manufacturing environments. Engineered with precision and reliability in mind, this controller component is a solution for maintaining optimal pressure levels.

DIMENSIONS(MM)

Size	A	B	C	Approx Weight
15NB	165	175	215	1 KG

All dimensions are in mm(general tolerance ± 2 mm)



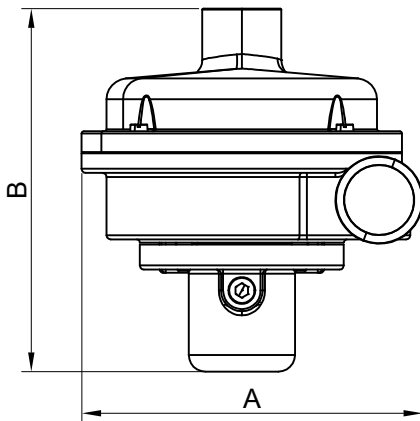
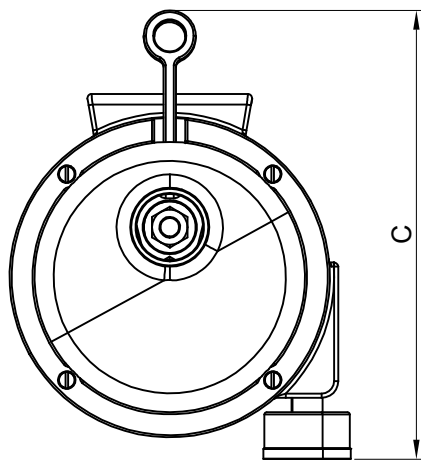
Mechanical Pressure Controller (MPC-50)

FEATURES

- Valve mounted compact and simple pressure control system.
- Output up to 3 kg/cm² hence valve Positioner is not required.
- Can be used directly for Pressure Reduction or as Overflow system.
- No additional Instruments required.
- Totally mechanical, very easy to maintain in-house.
- No electronics, hence not attached by ambient temperature.
- All materials including sensing bellows are Cast AL and SS hence corrosion resistant.
- Can be used with any control valve with any Pneumatic Actuator.
- Very Little Air Consumption <2 Nm³/hr.

PRESSURE CONTROL RANGES AVAILABLE

0 TO 3 BAR
2 TO 9 BAR
8 TO 23 BAR



INSTALLATION :

Connect the inlet port of the Mechanical Pressure Controller Component to the incoming fluid source, such as a steam or water line. Then, connect the outlet port to the downstream system or equipment that requires regulated pressure. Ensure proper sealing and secure connections to prevent leaks and ensure efficient pressure regulation.

Principal Of Operations:

- A controlled quantity of air at constant pressure is applied to the controller.
- Set pressure (P1) is compared with pressure to be controlled (P2).
- Any deviation between P1 & P2 causes movement of flapper towards or away from the nozzle.
- This effects the output pressure (Po) which is utilized for controlling the Pressure supplied to the Actuator.

* NOTE.: WE RESERVE THE RIGHT TO CHANGE SPECIFICATIONS WITHOUT PRIOR NOTICE FOR THE DEVELOPMENT AND IMPROVEMENT OF THE PRODUCT.

Page 01 of 01